

Архангельск (8182)63-90-72 Астана (7172)727-132 Астрахань (8512)99-46-04 Барнаул (3852)73-04-60 Белгород (4722)40-23-64 Брянск (4832)59-03-52 Владивосток (423)249-28-31 Волгоград (844)278-03-48 Вологда (8172)26-41-59 Воронеж (473)204-51-73 Екатеринбург (343)384-55-89 Иваново (4932)77-34-06 Ижевск (3412)26-03-58 Казань (843)206-01-48 Калининград (4012)72-03-81 Калуга (4842)92-23-67 Кемерово (3842)65-04-62 Киров (8332)68-02-04 Краснодар (861)203-40-90 Красноярск (391)204-63-61 Курск (4712)77-13-04 Липецк (4742)52-20-81 Магнитогорск (3519)55-03-13 Москва (495)268-04-70 Мурманск (8152)59-64-93 Набережные Челны (8552)20-53-41 Нижний Новгород (831)429-08-12 Новокузнецк (3843)20-46-81 Новосибирск (383)227-86-73 Омск (3812)21-46-40 Орел (4862)44-53-42 Оренбург (3532)37-68-04 Пенза (8412)22-31-16 Пермь (342)205-81-47 Ростов-на-Дону (863)308-18-15 Рязань (4912)46-61-64 Самара (846)206-03-16 Санкт-Петербург (812)309-46-40 Саратов (845)249-38-78 Севастополь (8692)22-31-93 Симферополь (3652)67-13-56 Смоленск (4812)29-41-54 Сочи (862)225-72-31 Ставрополь (8652)20-65-13 Сургут (3462)77-98-35 Тверь (4822)63-31-35 Томск (3822)98-41-53 Тула (4872)74-02-29 Тюмень (3452)66-21-18 Ульяновск (8422)24-23-59 Уфа (347)229-48-12 Хабаровск (4212)92-98-04 Челябинск (351)202-03-61 Череповец (8202)49-02-64 Ярославль (4852)69-52-93

Единый адрес: ath@nt-rt.ru | <http://albright.nt-rt.ru>

The SW82P is sealed to IP66 and has been designed for direct current loads, particularly motors as used on electric vehicles such as industrial trucks. Developed for both interrupted and uninterrupted loads, the SW82P is suitable for switching Resistive, Capacitive and Inductive loads.

| Application | Interrupted | Uninterrupted |
|---|-------------|------------------|
| Thermal Current Rating (I _{th}) | ▲ | 100A |
| Intermittent Current Rating: | | |
| 30% Duty | ▲ | 185A |
| 40% Duty | ▲ | 160A |
| 50% Duty | ▲ | 140A |
| 60% Duty | ▲ | 130A |
| 70% Duty | ▲ | 120A |
| Rated Fault Current Breaking Capacity (I _{cn}) 5ms Time Constant: (in accordance with UL583*) | ▲ | 800A at 80V |
| SW82P | ▲ | 150A at 96V D.C. |
| Rated Fault Current Breaking Capacity (I _{cn}) Resistive Load: (in accordance with UL508*) | ▲ | 150A at 96V D.C. |
| SW82P | ▲ | 150A at 96V D.C. |

| Maximum Recommended Contact Voltages (U _c): (Both Poles in same circuit) | SW82P |
|--|----------------------|
| SW82P | 96V D.C. |
| Typical Voltage Drop per pole across New Contacts at 100A | 50mV |
| Mechanical M.T.B.F | >5 x 10 ⁶ |
| Coil Voltage Available (U _c) (Rectifier board required for A.C.) | From 6 to 240V D.C. |

| Coil Power Dissipation: | Highly Intermittent Rated Types | Intermittently Rated types | Prolonged Rated Types | Continuously Rated Types |
|---------------------------------|---------------------------------|----------------------------|-----------------------|--------------------------|
| Highly Intermittent Rated Types | 20 - 30 Watts | 15 - 20 Watts | 13 - 15 Watts | 7 - 13 Watts |

| Maximum Pull-In Voltage (Coil at 20° C) Guideline: | Highly Intermittent Rated types (Max 25% Duty Cycle) | Intermittently Rated types (Max 70% Duty Cycle) | Prolonged Operation (Max 90% Duty Cycle) | Continuously Rated Types (100% Duty Cycle) |
|--|--|---|--|--|
| Highly Intermittent Rated types (Max 25% Duty Cycle) | 60% U _s | 60% U _s | 60% U _s | 66% U _s |

| Drop-Out Voltage Range | Typical Pull-In Time (N/O Contacts to Close) | Typical Drop-Out Time (N/O Contacts to Open): |
|---|--|---|
| Drop-Out Voltage Range | 10 - 25% U _s | 20ms |
| Without Suppression | 5ms | 5ms |
| With Diode Suppression | 50ms | 50ms |
| With Diode and Resistor (Subject to resistance value) | 8 - 20ms | 8 - 20ms |
| Typical Contact Bounce Period | 3ms | 3ms |
| Operating Ambient Temperature | - 40°C to + 60°C | - 40°C to + 60°C |

| Guideline Contactor Weight: | SW82P |
|-----------------------------|---------|
| Guideline Contactor Weight: | 450 gms |

| Advised Connection Sizes for Maximum Continuous Current | |
|---|---|
| Copper busbar | 65mm ² [0.1inch ²] |
| Cable | Rated suitable for Application |

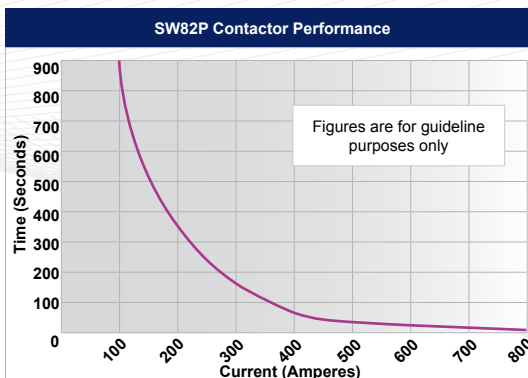
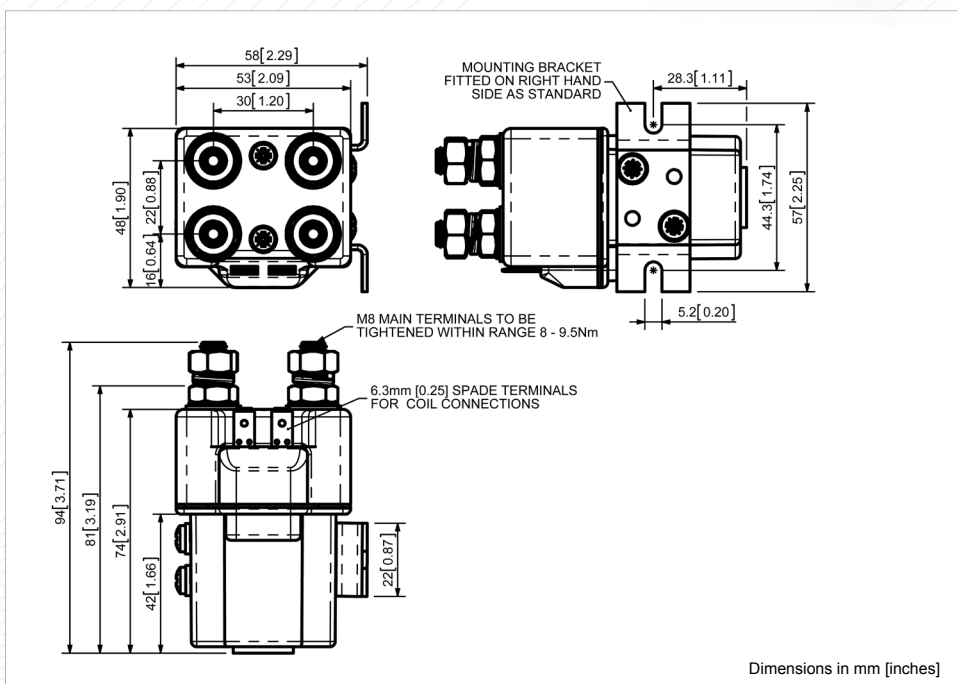
Key: ▲ = Interrupted ▲ = Uninterrupted
Note: Where applicable values shown are at 20°C
 * Please check our web site for product UL status

- Interrupted current - opening and closing on load with frequent switching (results in increased contact resistance).
- Uninterrupted current - no or infrequent load switching requirements (maintains a lower contact resistance).

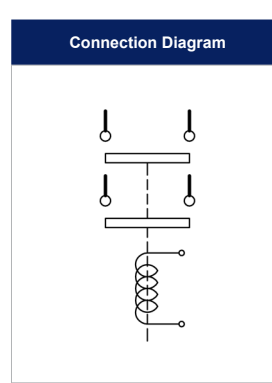
The SW82P features double pole double breaking main contacts with silver alloy tips, which are weld resistant, hard wearing and have excellent conductivity. The SW82P is compact in size and features an enclosed top cover and offers environmental protection to IP66. The SW82P has M8 stud main terminals and 6.3mm spade coil connections. Mounted using supplied brackets, mounting can be horizontal or vertical, when vertical the M8 contact studs should point upwards. If the requirement is for downwards orientation we can adjust the contactor to compensate for this.



SW82P



Contact Performance Key:
 — Interrupted and Uninterrupted Current



| SW82P Available Options | | |
|---|--------|---|
| General | Suffix | |
| Auxiliary Contacts | X | |
| Auxiliary Contacts - V3 | X | |
| Magnetic Blowouts† | X | |
| Magnetic Blowouts - High Powered† | X | |
| Armature Cap | X | |
| Mounting Brackets (See Stud Range Catalogue) | ● | |
| Magnetic Latching† (Not fail safe) | ○ | M |
| Closed Contact Housing | ● | |
| Environmentally Protected IP66 | ● | P |
| EE Type (Steel Shroud) | X | |
| Contacts | | |
| Large Tips | ○ | L |
| Textured Tips | ○ | T |
| Silver Plating | X | |
| Coil | | |
| AC Rectifier Board (Fitted) | X | |
| Coil Suppression† | ○ | |
| Flying Leads | X | |
| Manual Override Operation | X | |
| M4 Stud Terminals | ○ | |
| M5 Terminal Board | X | |
| Vacuum Impregnation | ○ | |
| Key: Optional ○ Standard ● Not Available X | | |
| † Connections become polarity sensitive | | |