

Архангельск (8182)63-90-72 Астана (7172)727-132 Астрахань (8512)99-46-04 Барнаул (3852)73-04-60 Белгород (4722)40-23-64 Брянск (4832)59-03-52 Владивосток (423)249-28-31 Волгоград (844)278-03-48
 Вологда (8172)26-41-59 Воронеж (473)204-51-73 Екатеринбург (343)384-55-89 Иваново (4932)77-34-06 Ижевск (3412)26-03-58 Казань (843)206-01-48 Калининград (4012)72-03-81 Калуга (4842)92-23-67
 Кемерово (3842)65-04-62 Киров (8332)68-02-04 Краснодар (861)203-40-90 Красноярск (391)204-63-61 Курск (4712)77-13-04 Липецк (4742)52-20-81 Магнитогорск (3519)55-03-13 Москва (495)268-04-70
 Мурманск (8152)59-64-93 Набережные Челны (8552)20-53-41 Нижний Новгород (831)429-08-12 Новокузнецк (3843)20-46-81 Новосибирск (383)227-86-73 Омск (3812)21-46-40 Орел (4862)44-53-42
 Оренбург (3532)37-68-04 Пенза (8412)22-31-16 Пермь (342)205-81-47 Ростов-на-Дону (863)308-18-15 Рязань (4912)46-61-64 Самара (846)206-03-16 Санкт-Петербург (812)309-46-40 Саратов (845)249-38-78
 Севастополь (8692)22-31-93 Симферополь (3652)67-13-56 Смоленск (4812)29-41-54 Сочи (862)225-72-31 Ставрополь (8652)20-65-13 Сургут (3462)77-98-35 Тверь (4822)63-31-35 Томск (3822)98-41-53
 Тула (4872)74-02-29 Тюмень (3452)66-21-18 Ульяновск (8422)24-23-59 Уфа (347)229-48-12 Хабаровск (4212)92-98-04 Челябинск (351)202-03-61 Череповец (8202)49-02-64 Ярославль (4852)69-52-93

Единый адрес: ath@nt-rt.ru | http://albright.nt-rt.ru

Application	Interrupted	Uninterrupted
Thermal Current Rating (I_{th})	▶	80A
Intermittent Current Rating:		
30% Duty	▶	145A
40% Duty	▶	125A
50% Duty	▶	115A
60% Duty	▶	105A
70% Duty	▶	95A
Rated Fault Current Breaking Capacity (I_{cn}) 5ms Time Constant: (in accordance with UL583*)		
SW66	▶	400A at 48V D.C.
SW66B	▶	400A at 96V D.C.
Rated Fault Current Breaking Capacity (I_{cn}) Resistive Load: (in accordance with UL508*)		
SW66	▶	120A at 60V D.C.
SW66B	▶	120A at 96V D.C.
Maximum Recommended Contact Voltages (U_e):		
SW66	▶	48V D.C. 60V D.C.
SW66B	▶	96V D.C.
Typical Voltage Drop per pole across New Contacts at 80A	▶	<40mV
Mechanical M.T.B.F	▶	>3 x 10 ⁶
Coil Voltage Available (U_c) (Rectifier board required for A.C.)	▶	From 6 to 130V D.C.
Coil Power Dissipation:		
Highly Intermittent Rated Types	▶	14 - 21 Watts
Intermittently Rated types	▶	10 - 14 Watts
Prolonged Rated Types	▶	7 - 10 Watts
Continuously Rated Types	▶	5 - 7 Watts
Maximum Pull-In Voltage (Coil at 20° C) Guideline:		
Highly Intermittent Rated types (Max 25% Duty Cycle)	▶	60% U_s
Intermittently Rated types (Max 70% Duty Cycle)	▶	60% U_s
Prolonged Operation (Max 90% Duty Cycle)	▶	60% U_s
Continuously Rated Types (100% Duty Cycle)	▶	66% U_s
Drop-Out Voltage Range	▶	10 - 25% U_s
Typical Pull-In Time	▶	15ms
Typical Drop-Out Time (N/O Contacts to Open):		
Without Suppression	▶	6ms
With Diode Suppression	▶	35ms
With Diode and Resistor (Subject to resistance value)	▶	8 - 20ms
Typical Main Contactor Changeover time:		
Normally Closed to Normally Open	▶	6ms
Normally Open to Normally Closed	▶	4ms
Typical Contact Bounce Period	▶	3ms
Operating Ambient Temperature	▶	-40°C to +60°C
Guideline Contactor Weight:		
SW66	▶	480 gms
Per Auxiliary	▶	+ 20 gms
With Blowouts	▶	+ 16 gms

Auxiliary Details		
Auxiliary Thermal Current Rating	▶	5A
Auxiliary Contact Switching Capabilities (Resistive Load):		
	▶	5A at 24V D.C.
	▶	1A at 60V D.C.
	▶	0.5A at 120V D.C.
	▶	0.25A at 240V D.C.

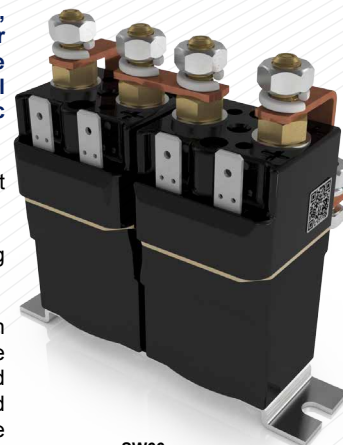
Advised Connection Sizes for Maximum Continuous Current		
Copper busbar	▶	52mm ² [0.08inch ²]
Cable	▶	Rated suitable for Application

Key: ▶ = Interrupted ▲ = Uninterrupted
Note: Where applicable values shown are at 20° C
 * Please check our web site for product UL status
 This contactor is configured with links for motor reversing. The resultant circuit is failsafe so that if both coils are energised simultaneously, an open circuit results.

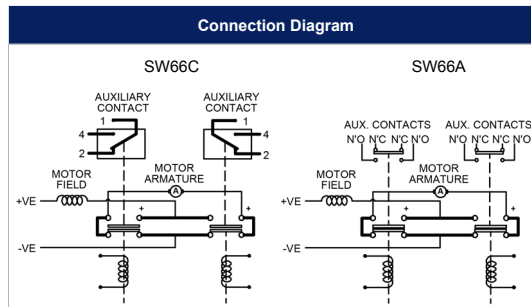
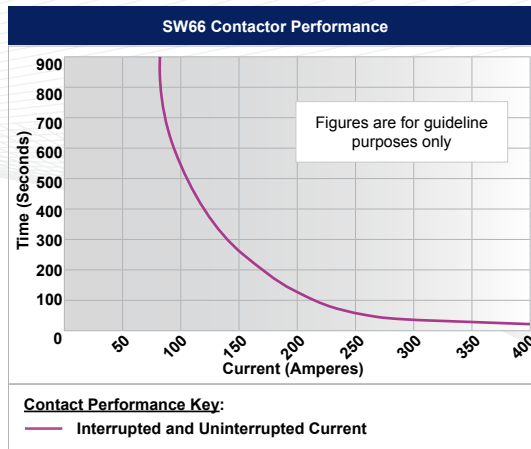
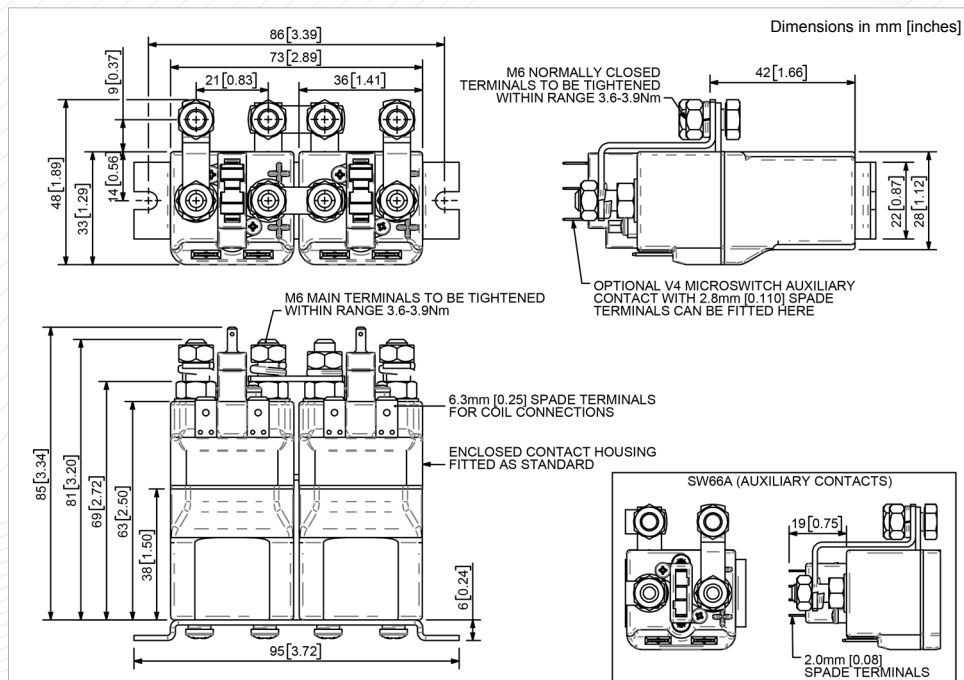
The SW66 is a miniature series single pole, free standing, compact contactor designed for motor reversing. Devised for both interrupted and uninterrupted loads, the SW66 is suitable for switching Resistive, Capacitive and Inductive loads. Typical applications include switching small traction motors, hydraulic power packs and small electric winch motors.

- Interrupted current - opening and closing on load with frequent switching (results in increased contact resistance).
- Uninterrupted current - no or infrequent load switching requirements (maintains a lower contact resistance).

The SW66 features single pole double breaking main contacts with silver alloy tips, which are weld resistant, hard wearing and have excellent conductivity. The SW66 has M6 stud main terminals and 6.3mm spade coil connections. It can be mounted via M4 tapped holes or mounting brackets, either supplied fitted, or as separate items. Mounting can be on the side or base of the contactor.



SW66



SW66 Available Options		
General		Suffix
Auxiliary Contacts	○	A
Auxiliary Contacts - V4	○	C
Magnetic Blowouts†	○	B
Magnetic Blowouts - High Powered†	X	
Armature Cap	X	
Mounting Brackets (See Stud Contactor Series Catalogue)	●	
Magnetic Latching† (Not fail safe)	○	M
Closed Contact Housing‡	●	
Environmentally Protected IP66	X	
EE Type (Steel Shroud)	X	
Contacts		
Large Tips	X	
Textured Tips	X	
Silver Plating	X	
Coil		
AC Rectifier Board (Fitted)	X	
Coil Suppression†	○	
Flying Leads	X	
Manual Override Operation	X	
M4 Stud Terminals	○	
M5 Terminal Board	X	
Vacuum Impregnation	X	

Key: Optional ○ Standard ● Not Available X
 † Connections become polarity sensitive
 ‡ Enclosed top cover standard when blowouts not fitted